

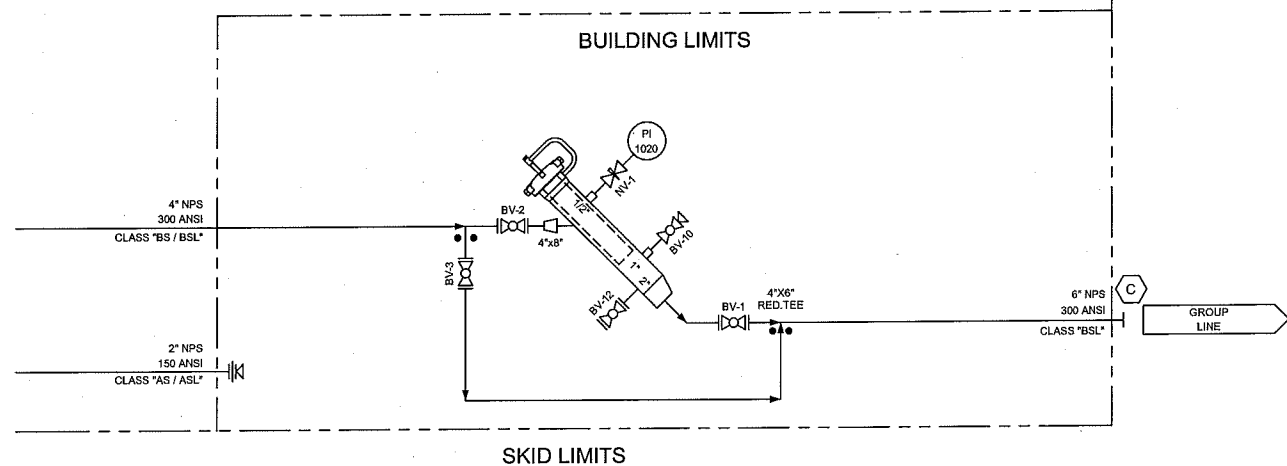
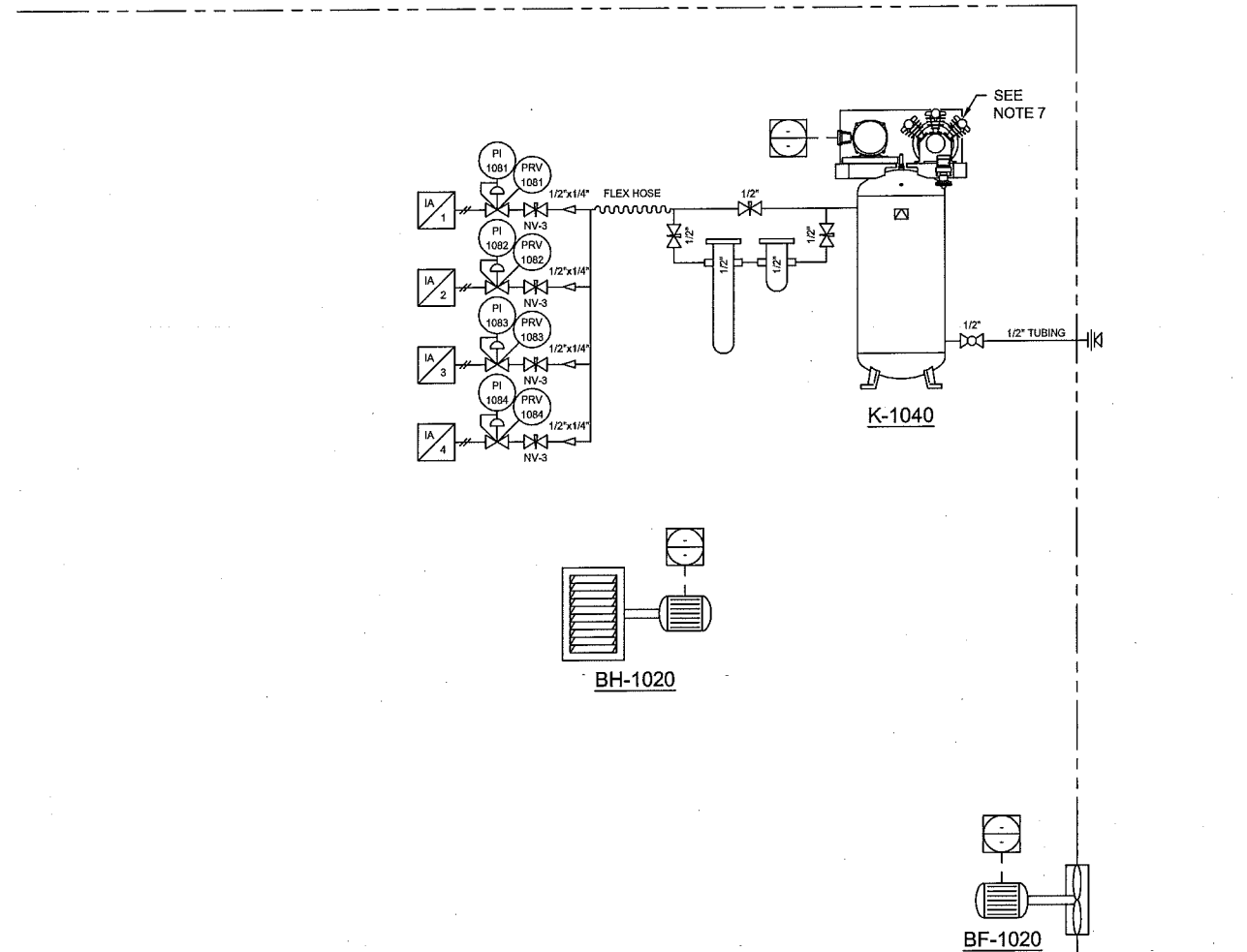
SKID/BUILDING LIMITS

REV.	DATE	DESCRIPTION	BY	CHKD	APP'D
2	03/14/13	AS-BUILT			
1	09/27/12	REVISED ESD LOOP	DB	LW	PC
0	09/14/12	ISSUED FOR CONSTRUCTION	DB	LW	PC

CUSTOMER: <b>PennWest Exploration</b>		TITLE / PROJECT: 3" INLET (10 WELLS) / 4" HEADER 24"OD X 60" S/S X 720 PSI AB SOUR TEST SEPARATOR PKG	
DRAWING NAME: P&ID	QUANTITY: 1	PACKAGE SERIAL NO. (S): 12-052-01	
JOB NO. (S): 12-052	DRAWN BY: D. BRYAN	DATE: 09/14/12	
REV. NO.: 2	PAGE NO.: 1 OF 2	SCALE: N.T.S.	DRAWING NO.: 12-052-P&ID

VALVES & SPECIAL ITEMS		
TAG	QTY.	DESCRIPTION
BR-1	2	BLEED RING, 2" 3-600 ANSI, TAPPED (2) 1" & (1) 1/2" NPT, SA105N
BR-2	1	BLEED RING, 2" 3-600 ANSI, TAPPED (1) 1/2" NPT, SA105N
BV-1	1	KF DOUBLE B&B BALL VALVE, 6" 300 ANSI RF FP, LOW TEMP NACE
BV-2	1	KF DOUBLE B&B BALL VALVE, 4" 300 ANSI RF FP, LOW TEMP NACE
BV-3	1	KF DOUBLE B&B BALL VALVE, 4" 300 ANSI RF FP, LOW TEMP NACE
BV-4	10	KF BALL VALVE, 3" 300 ANSI RF FP, NACE
BV-5	11	KF BALL VALVE, 3" 300 ANSI RF FP, NACE
BV-6	5	KF BALL VALVE, 2" 300 ANSI RF FP, NACE
BV-7	2	KF BALL VALVE, 2" 300 ANSI RF FP, NACE
BV-8	1	KF BALL VALVE, 2" NPT 3M RP, NACE
BV-9	17	KF BALL VALVE, 1" NPT 3M FP, NACE
BV-10	3	KF BALL VALVE, 1" NPT 3M FP, LOW TEMP NACE
BV-11	3	KF BALL VALVE, 1/2" NPT 3M FP, NACE
BV-12	1	KF BALL VALVE, 2" 300 ANSI RF FP, LOW TEMP NACE
BV-13	2	KF BALL VALVE, 2" NPT 3M FP, NACE
CV-1	2	WHEATLEY 510 CHECK VALVE, 4" 300 ANSI RF, NACE FP
CV-2	2	WHEATLEY WAFER CHECK VALVE, 3" 300 ANSI, NACE
CV-3	3	WHEATLEY WAFER CHECK VALVE, 2" 300 ANSI, NACE
NV-1	8	WGI NEEDLE VALVE, 1/2" NPT MXF 6M, WN1434P, 316SS
NV-2	1	WGI BLOCK AND BLEED NEEDLE VALVE, 1/2" NPT MXF, 10M, WN8534, 316SS
NV-3	4	WGI NEEDLE VALVE, 1/4" NPT MXF 6M, WN1632P, CS
ST-1	0	Y-STRAINER, 2" 300 ANSI RF, 316 BASKET, 1/8" PERFORATIONS, NACE

BILL OF MATERIALS	
TAG NO.	DESCRIPTION
BF-1020	BUILDING FAN, 12 ACPH, 120VAC, 1 PH, 60HZ, 1/4 HP, XP
BH-1020	RUFFNECK FX5-600360-150T, 51,200 BTU/HR, 600V, 3PH, 60HZ, XP C/W RUFFNECK MOUNT KIT PIPE, FX4/FX5 16" FAN
K-1040	EAGLE AIR COMPRESSOR PV02A, 2HP, 600V, 3PH, 60HZ, XP C/W DMD4-4 DELTECH PERMEABLE MEMBRANE DRYER
V-1000	24"OD X 60" S/S X 720 PSI @ +130°/20°F AB SOUR VERTICAL SEPARATOR
EY 1010	ASCO EF6320G200DC 3-WAY SOLENOID VALVE, UNIVERSAL, C/W PNEUMATIC TRIP IND.
FCV 1010	VALTORC 3-WAY T-PORT BALL VALVE, 2" 300 ANSI, SS C/W VALTORC VT150SR SPRING RETURN ACTUATOR, 80 PSI SUPPLY
FE 1000	CANALTA SINGLE CHAMBER RUN, 2" 300 ANSI, NACE, FOC, SCH. 40. AGA 2000, PIN FLOW CONDITIONER, 49" OAL, (1) 1" & (1) 3/4" TOLS C/W 0.375" BORE ORIFICE PLATE & ONE (1) EXTRA ORIFICE PLATE HOLDER
FE/FQIT 1010	FOXBORO CORIOLIS MASS FLOW AND DENSITY METER, 2" 600 ANSI 18.4" FACE TO FACE, MODEL NO. CFS10-20SECN-E (SEE NOTE 8)
LC 1010	NORRISEAL EVS, SNAP, DA, 0-30 PSI, PVC DISPLACER, NACE
LCV 1010	NORRISEAL 2220, 2" 300 ANSI RF, 3/4" QUICK-OPEN TRIM, FC, NACE
LG 1010	QUEST-TEC 61RL LEVEL GAUGE C/W GAUGE COCKS, 1S, 3/4" X 1/2", NACE
LSHH 1010	MURPHY LS200NDOV, 2" NPT, CS BODY, 304SS FLOAT C/W PNEUMATIC TRIP IND.
MVS/TE 1000	FISHER MVS205R, 0-3626 PSI STATIC, 0-250" WC, -40/167°F, NACE C/W AIRCOM 3-WIRE PLATINUM 100-OHM RTD SENSOR, 5VM-SS-8-R MANIFOLD SS & TOW, 3/4" X 1/2" X 2-1/2" X 0.702", 316SS (SEE NOTE 8)
PC 1000	CVS 4150, 0-300 PSI RANGE, SST, 6-30 PSI, DA
PCV 1000	NORRISEAL 2220, 2" 300 ANSI RF, 3/4" THROTTLE TRIM, FC
PI 1000 / 1001	PI, 4" FACE, 1000 PSI, DUAL SCALE, SS/SS, 1/2" BTM, LF, NACE
PI 1010 / 1020-1	PI, 4" FACE, 1000 PSI, DUAL SCALE, SS/SS, 1/2" BTM, LF, NACE
PI 1081-1082	PI, 2-1/2" FACE, 60 PSI, DUAL SCALE, SS/BRASS, 1/4" CBM, LF
PI 1083	PI, 2-1/2" FACE, 60 PSI, DUAL SCALE, SS/BRASS, 1/4" BTM, LF
PI 1084	PI, 2-1/2" FACE, 160 PSI, DUAL SCALE, SS/BRASS, 1/4" BTM, LF
PRV 1081-1083	FISHER 67CFR, 1/4", 0-35 PSI
PRV 1084	FISHER 67CFR, 1/4", 0-125 PSI
PSH 1010	CVS 7970 HIGH PRESSURE PILOT, SET AT 150 PSI RISING C/W PNEUMATIC TRIP IND.
PSV 1010	TAYLOR 8200, 1" MNPT X 1" FNPT, NACE, SET AT 640 PSI
PY 1010	AMOT 4057 CP 3-WAY VALVE, MANUAL LATCH/PRESSURE, SPRING RETURN
PY 1020	AMOT 4057 CG 3-WAY VALVE, PRESSURE OPERATED, SPRING RETURN
TI/TW 1010	TI, 3" FACE X 6" STEM, -40F/160F, DUAL SCALE, 1/2" CBM, NACE THERMOWELL, 3/4" X 1/2" X 6" X 0.260" STEM, 316SS



PACKAGE CONNECTION SCHEDULE	
A1-2	4" 300 ANSI RF, EMULSION INLET
B1-10	3" 300 ANSI RF, EMULSION INLET
C	6" 300 ANSI RF, EMULSION OUTLET
D	1" 150 ANSI MNPT, PSV OUTLET
E	2" 150 ANSI MNPT, DRAIN HEADER OUTLET
F	2" 300 ANSI RF C/W 2" FNPT (PLUGGED), PROVER OUTLET
G	2" 300 ANSI RF C/W 2" FNPT (PLUGGED), PROVER OUTLET



CUSTOMER:		TITLE / PROJECT:	
PennWest Exploration		3" INLET (10 WELLS) / 4" HEADER	
		24"OD X 60" S/S X 720 PSI AB SOUR TEST SEPARATOR PKG	
DRAWING NAME:	QUANTITY:	PACKAGE SERIAL NO. (IF)	
P&ID	1	12-052-01	
JOB NO. (S):	DRAWN BY:	DATE:	
12-052	D. BRYAN	09/14/12	
REV. NO.:	PAGE NO.:	SCALE:	DRAWING NO.:
2	2 OF 2	N.T.S.	12-052-P&ID

**GENERAL NOTES**

1. QUALITY CONTROL PROGRAM NUMBER IS AQP-1464
2. THREADED PIPING PROGRAM IS GF-1 REV. 1
3. PROCESS/SENSING TUBING (GAS) TO BE 1/2" X 0.049" W.T. 316SS
4. PROCESS/SENSING TUBING (HYDRAULIC) TO BE 1/2" X 0.035" W.T. 316SS
5. INSTRUMENT LINE TUBING TO BE 3/8" X 0.035" W.T. 304SS
6. ALL TUBE FITTINGS TO BE SS (PROCESS/SENSING), CS (INSTRUMENT)
7. AIR SUCTION MUST BE OUTSIDE OF BUILDING
8. SUPPLIED BY GLOBALFLOW AUTOMATION