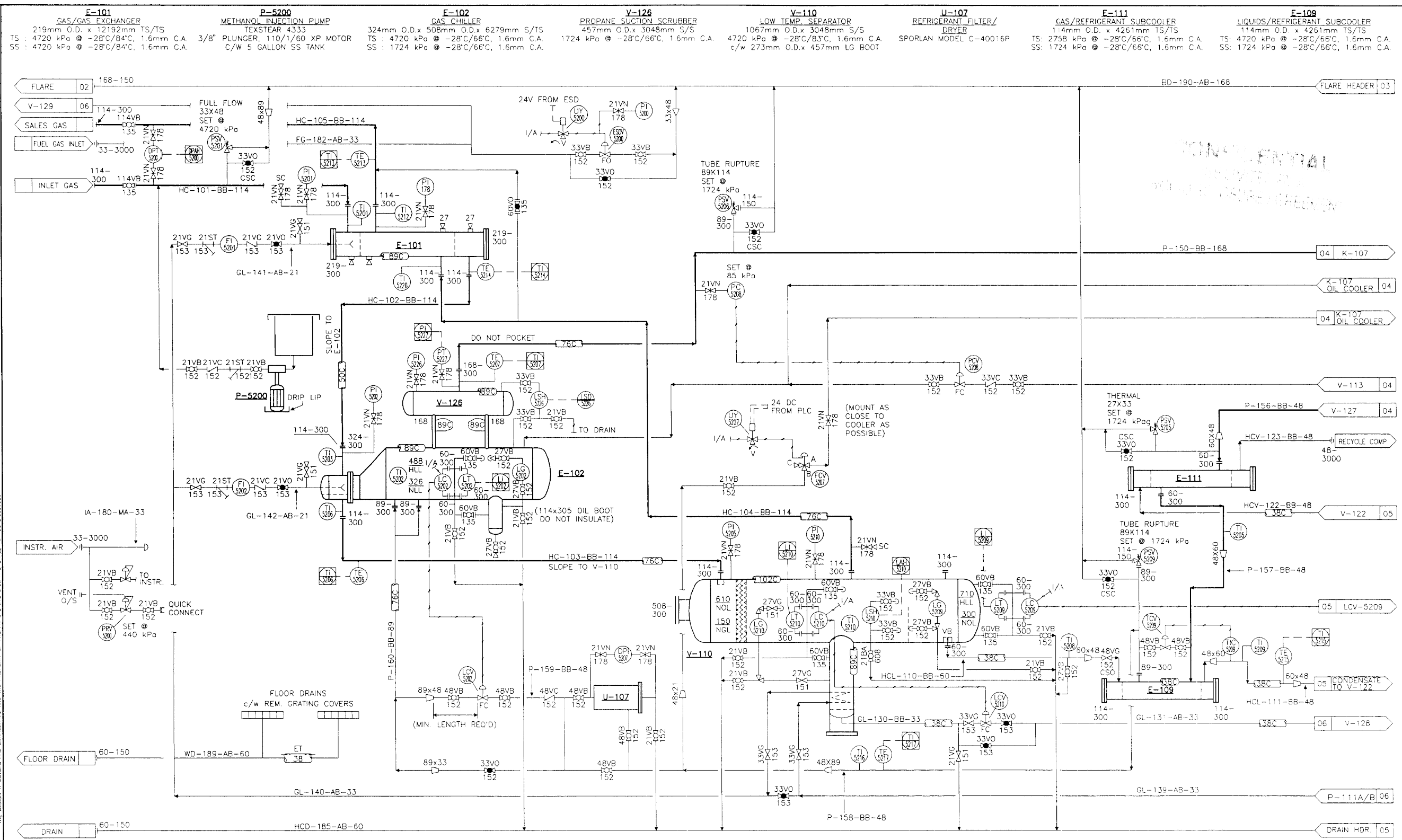


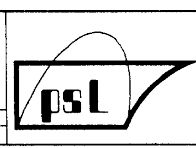
THIS DRAWING AND THE DESIGN IT COVERS ARE CONFIDENTIAL AND THE PROPERTY OF PROPAG SYSTEMS LTD. AND SHALL NOT BE DISCLOSED TO OTHERS OR REPRODUCED IN ANY MANNER OR USED FOR ANY PURPOSE WHATSOEVER EXCEPT BY WRITTEN CONSENT OF PROPAG.



GENERAL NOTES	GENERAL NOTES	No.	REVISION	BY	DATE	CKD	ENG
1) MATERIALS USED O/S BUILDING TO BE LOW TEMP PER PCP SPECIFICATION.		3	AS BUILT DPH# 2982	VLM	JAN/95	BB	BB
		2	GENERAL REVISIONS	WC	JAN/95	BB	BB
		1	ISSUED FOR CONSTRUCTION	RC	NOV/94	BB	BB
		C	GENERAL REVISIONS	WC	OCT/94	BB	BB
		B	ISSUED FOR APPROVAL	WC	AUG/94	BB	BB
		A	ISSUED WITH RID	HK	JUN/94	LD	

PREPARED BY:		DRAWN		CHECKED		APPROVED		DATE		SCALE	
PROPAG SYSTEMS LTD.		HEATHER K		HEATHER K		HEATHER K		JUN 22/94		SCALE	

**PROPAG SYSTEMS LTD.**  
 ENGINEERING DESIGN FABRICATION CONSTRUCTION  
 AIRDRIE ALBERTA CANADA



PANCANADIAN PETROLEUM  
 BATTERY AND COMPRESSION FACILITY  
 REFRIGERATION PROCESSING PACKAGE - CHILLER SECTION  
 MECHANICAL FLOWSHEET  
 DWG. No.: D - MFS-94139-100 SHT. 3 OF 6 REV 3

<b>encana.</b>	REF. & GAS PLANT
	01-20-028-21 WAM
	BATTERY
	01-20-028-21 WAM
	2982
<b>DPH ENGINEERING INC.</b>	
PIPING AND INSTRUMENTATION DIAGRAM	
REFRIGERATION PACKAGE - CHILLER SECTION	
<b>WAYNE</b>	WN00885C

THIS DRAWING REPRESENTS PROPRIETARY INFORMATION AND SHOULD NOT BE DISTRIBUTED OR MODIFIED IN ANY MANNER THAT IS NOT IN THE BEST INTEREST OF ENCANIA OR THE ORIGINAL AUTHOR.