

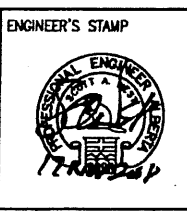
THIS DRAWING HAS BEEN MODIFIED I ORIGINAL MCC / LA INFORMATION HAS BEEN MOVED TO DWG. SW-PF201-17

**NOTES:**  
1. INSULATION AND TRACING TO EXTEND 300mm I/S BUILDING.

NUMBER	TITLE	NO	REVISION	BY	DATE	CKD	APP
		O	ISSUED FOR CONSTRUCTION (DPH FOCUS JOB # 9703)	VC	08.11.21		
		F	RE-ISSUED FOR DESIGN (DPH FOCUS JOB # 9703)	VC	08.09.11		
		E	ISSUED FOR DESIGN (DPH FOCUS JOB # 9703)	DJP	08.08.11		
		D	ISSUED FOR BID (DPH FOCUS JOB # 9703)	JSL	08.03.31		
		C	ISSUED FOR HAZOP (DPH FOCUS JOB # 9703)	JSL	08.03.03		
		B	ISSUED FOR APPROVAL (DPH FOCUS JOB # 9703)	JC	07.11.18		
		A	PRELIMINARY ISSUE	CWM	07.09.07		

PERMIT STAMP

PERMIT TO PRACTICE  
SWAN HILLS SYN FUELS  
PERMIT NUMBER: P 9603  
Date: 12/14/08



**DPH FOCUS**

DRAWN	CHECKED	APPROVED DSGN. ENG.	APPROVED PROJ. ENG.
BY CWM	[Signature]	[Signature]	[Signature]
DATE 07.09.07	08/12	17.11.07	17.11.07
DPH PROJECT No. 9703	DWG. SIZE A1 (504x841)		

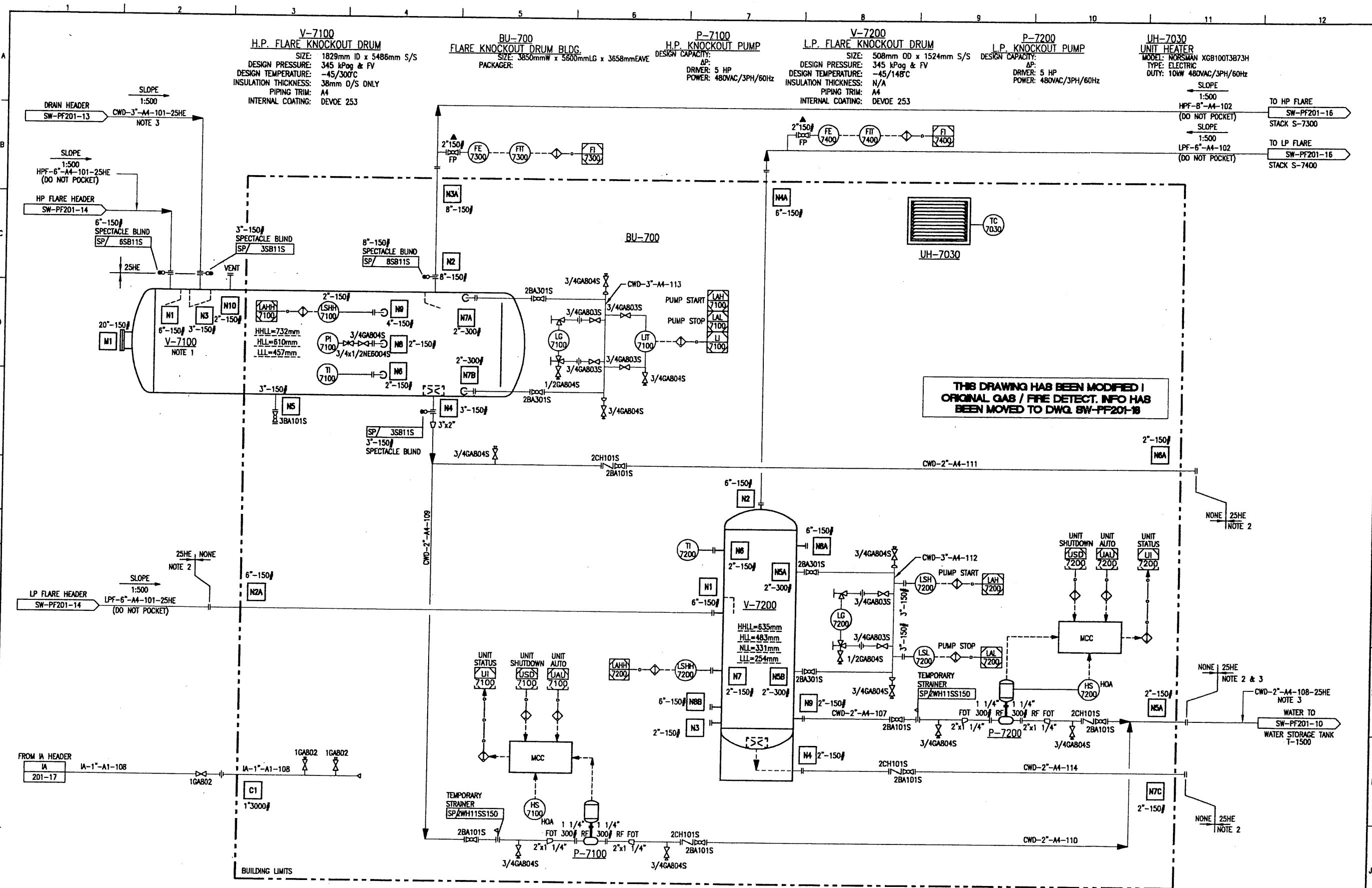
**SWAN HILLS SYN FUELS**

SWAN HILLS ISCG PRODUCTION FACILITY  
PIPING & INSTRUMENTATION DIAGRAM  
HP & LP FLARE HEADERS

SCALE NTS	DRAWING NUMBER SW-PF201-14	REV 0
-----------	----------------------------	-------

November 12, 2008 1:09:43 PM  
Drawing: C:\P04\SYNTHESIS\7703\PIPING\FLOW\PRODUCTION\SW-PF201-14.DWG TAB NAME MODEL  
Title: eng-iss-08.dwg

15  
02



THIS DRAWING HAS BEEN MODIFIED | ORIGINAL GAS / FIRE DETECT. INFO HAS BEEN MOVED TO DWG. SW-PF201-18

- NOTES:**
- ELECTRIC HEAT TRACE BOTTOM OF VESSEL O/S BUILDING.
  - INSULATION TO EXTEND 300mm I/S BUILDING.
  - INTERNALLY COATED WITH DEVDE 253.
  - ALL PIPING LESS THAN 2" DIA ON INTERNALLY COATED LINES TO BE A9/E9 PIPE SPEC. MAT'L.
  - ▲ - DENOTES SUPPLIED BY INSTRUMENT VENDOR.

NO	REVISION	BY	DATE	CKD	APP
1	ISSUED FOR CONSTRUCTION (DPH FOCUS JOB # 9703)	VC	08.11.21		
0	ISSUED FOR FABRICATION (DPH FOCUS JOB # 9703)	VC	08.10.10		
F	RE-ISSUED FOR DESIGN (DPH FOCUS JOB # 9703)	VC	08.08.11		
E	ISSUED FOR DESIGN (DPH FOCUS JOB # 9703)	DPP	08.08.11		
D	ISSUED FOR BID (DPH FOCUS JOB # 9703)	JSL	08.03.31		
C	ISSUED FOR HAZOP (DPH FOCUS JOB # 9703)	JSL	08.03.03		
B	ISSUED FOR APPROVAL (DPH FOCUS JOB # 9703)	JC	07.11.18		
A	PRELIMINARY ISSUE	CWM	07.09.07		

PERMIT TO PRACTICE

ENGINEER'S STAMP

PERMIT NUMBER: P 0903

The Association of Professional Engineers, Geologists and Geophysicists of Alberta

**DPH FOCUS**

BY	CWM	CHECKED	APPROVED	APPROVED
DATE	07.09.07	08/12/17	08/12/17	08/12/17
DPH PROJECT No.	0703	DWG. SIZE	A1 (584x841)	

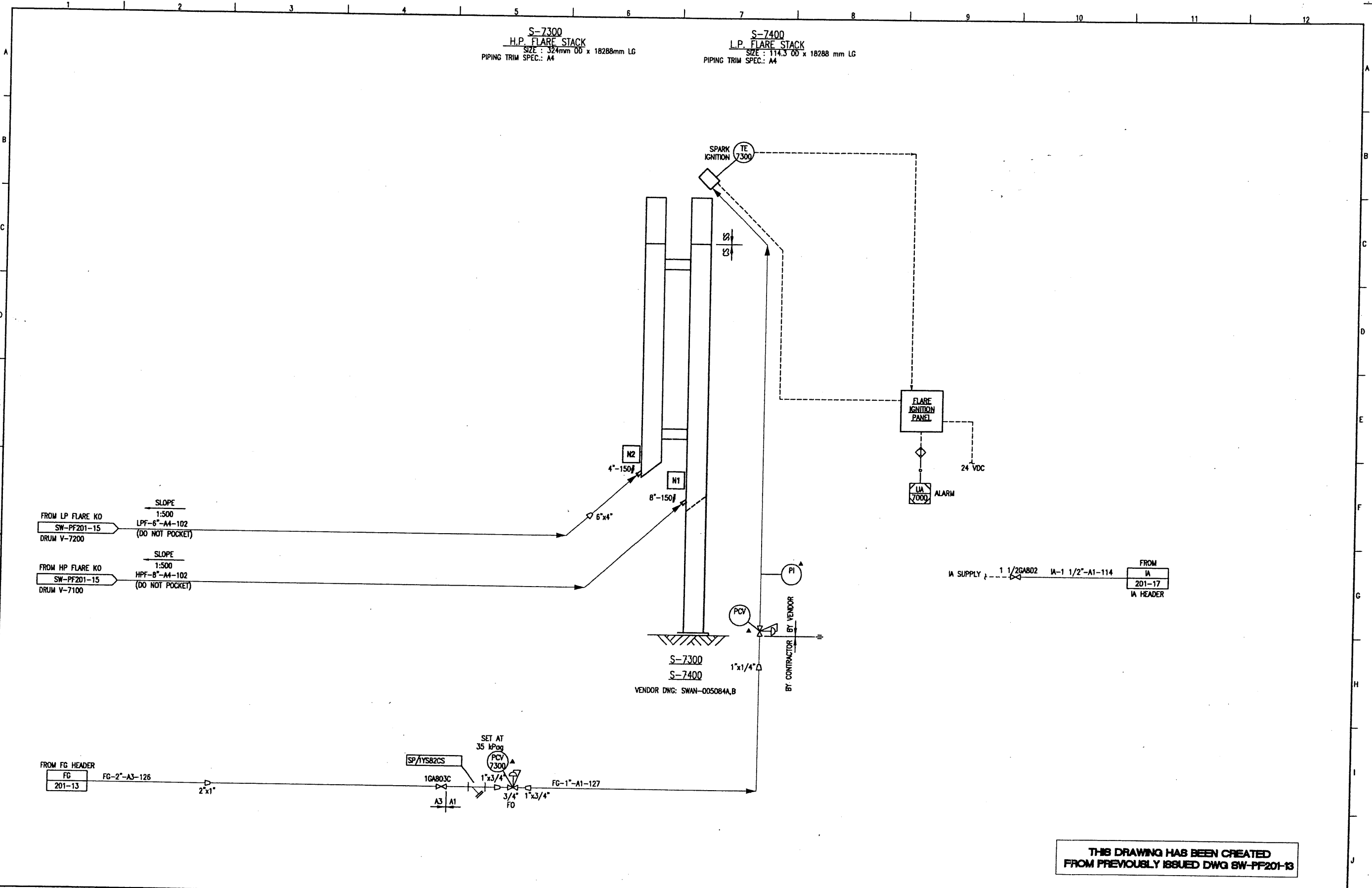
**SWAN HILLS SYNUELS**

SWAN HILLS ISCC PRODUCTION FACILITY  
PIPING & INSTRUMENTATION DIAGRAM  
BU-700 - FLARE KO DRUM BLDG.

SCALE	DRAWING NUMBER	REV
NTS	SW-PF201-15	1

October 20, 2008 9:28:45 AM  
 Drawing: C:\P200\SYNUELS\PIPING\IOWA\PRODUCTION\SW-PF201-15.DWG TAB NAME MODEL  
 Author: eng-wor-001  
 Appr: eng-pm-002

15  
02



THIS DRAWING HAS BEEN CREATED FROM PREVIOUSLY ISSUED DWG SW-PF201-13

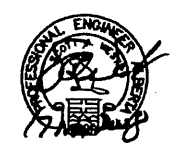
NOTES:

NUMBER	TITLE	NO	REVISION	BY	DATE	CKD	APP
		O	ISSUED FOR CONSTRUCTION (DPH FOCUS JOB # 9703)	VC	08.11.21		
		F	RE-ISSUED FOR DESIGN (DPH FOCUS JOB # 9703)	VC	08.09.11		
		E	ISSUED FOR DESIGN (DPH FOCUS JOB # 9703)	DFP	08.08.11		
		D	ISSUED FOR BID (DPH FOCUS JOB # 9703)	JSL	08.03.31		
		C	ISSUED FOR HAZOP (DPH FOCUS JOB # 9703)	JSL	08.03.03		
		B	ISSUED FOR APPROVAL (DPH FOCUS JOB # 9703)	JC	07.11.16		
		A	PRELIMINARY ISSUE	CWM	07.09.07		

PERMIT STAMP

PERMIT TO PRACTICE  
SWAN HILLS SYN FUELS  
 PERMIT NUMBER: P 9903  
The Association of Professional Engineers, Geologists and Geophysicists of Alberta

ENGINEER'S STAMP



**DPH FOCUS**

BY	CHECKED	APPROVED DSGN. ENG.	APPROVED PROJ. ENG.
CWM	[Signature]	[Signature]	[Signature]
DATE 07.09.07	DATE 17.10.07	DATE 17.10.07	DATE 17.10.07
DPH PROJECT No. 9703	DWG. SIZE A1 (504x841)		

SWAN HILLS SYN FUELS

SWAN HILLS ISCG PRODUCTION FACILITY PIPING & INSTRUMENTATION DIAGRAM S-7300/7400 - H.P./L.P. FLARE STACKS		
SCALE NTS	DRAWING NUMBER SW-PF201-16	REV 0

November 17, 2008 11:48:44 a.m.  
 Drawing: C:\P\001\SYN\ISCG\PRODUCTION\SW-PF201-16.DWG TAB NAME: MODEL  
 Xrefs: any-stand.dwg, any-stand.dwg

*Handwritten initials/signature*