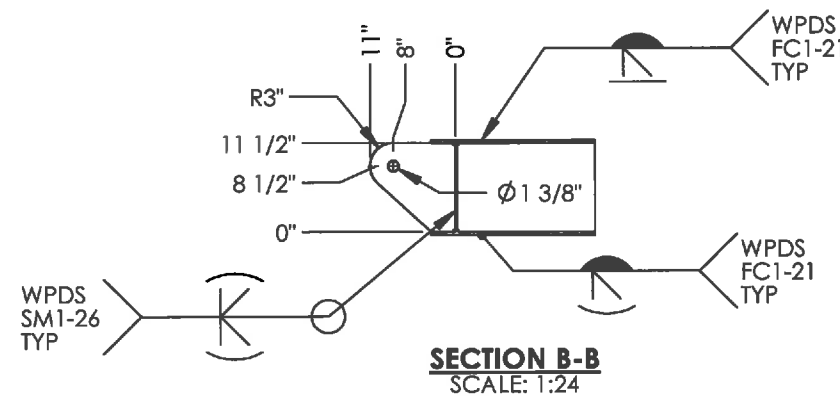
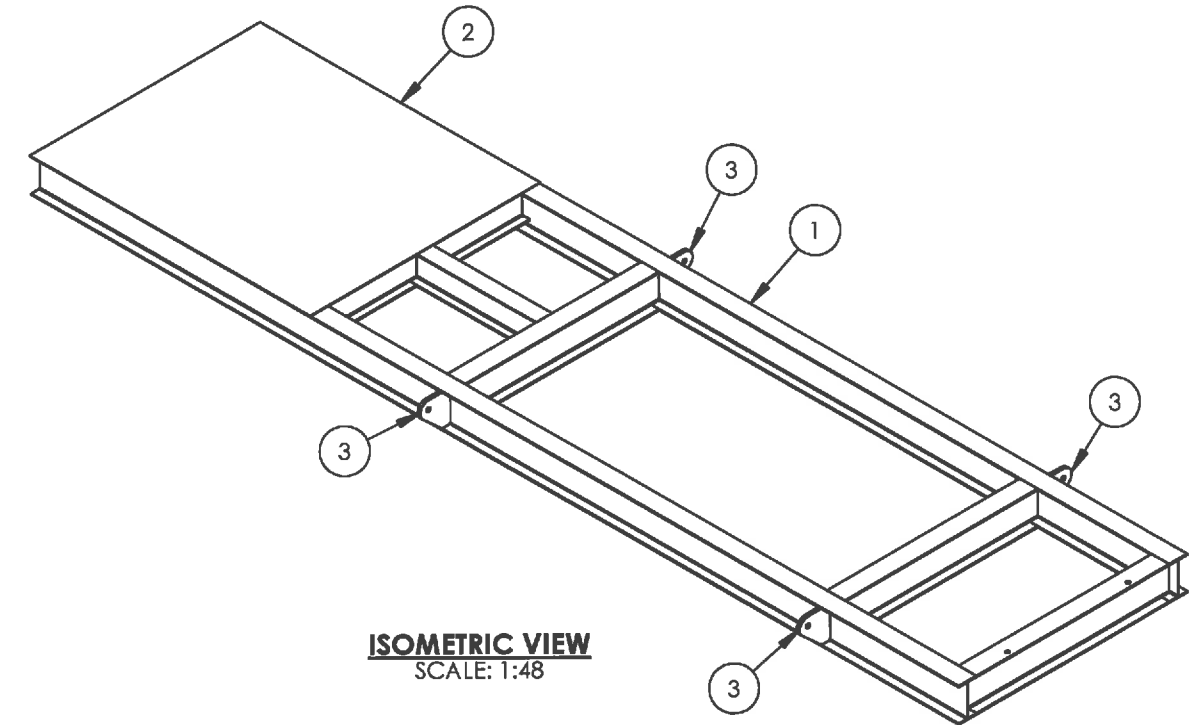
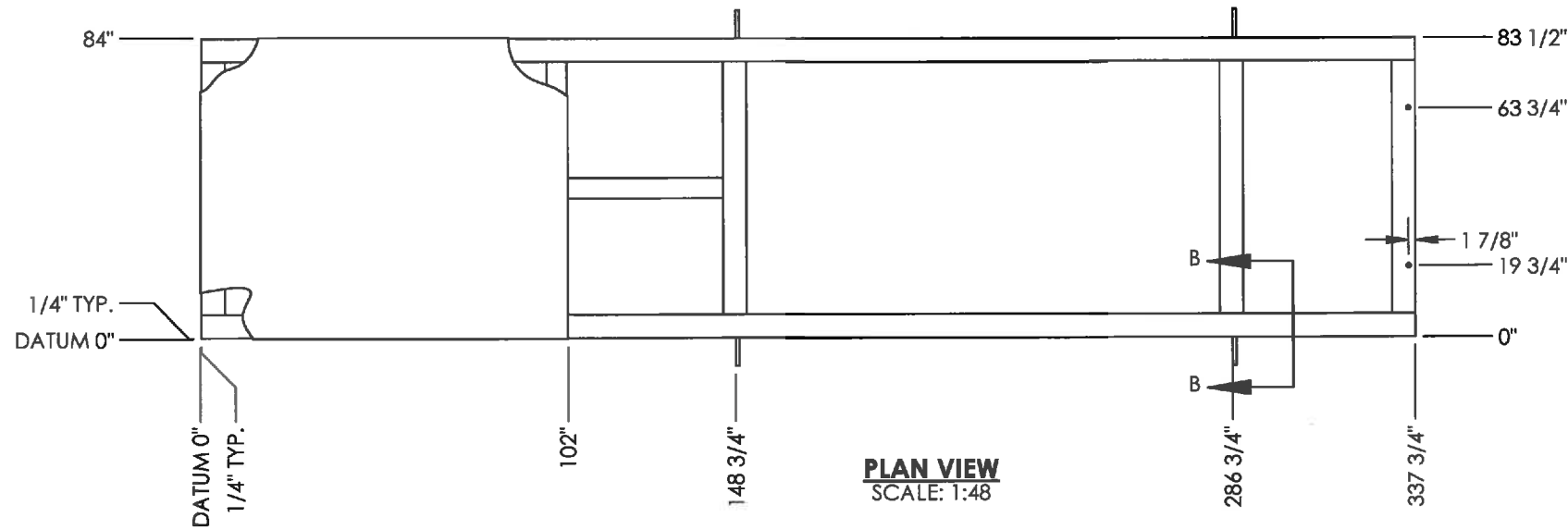


ITEM	PART #	DESCRIPTION	MTR #	LENGTH	QTY.
1	-	SEE CUT LIST			1
2	BUY	CHECKER PLATE 3/16" x 84" x 102" ASTM A786			1
3	PLAGYA	LIFT LUG PLATE 1" x 11 1/2" x 11" SA36/44W			4



ISOMETRIC VIEW
SCALE: 1:48

NOTES

- FABRICATE TO CSA W47.1 AND W59.
- ALL DIMENSIONS SHALL HAVE A TOLERANCE OF $\pm 1/8$ " UNLESS OTHERWISE SPECIFIED.
- COPE STRUCTURAL MEMBERS AS REQUIRED.
- RADIUS ALL SHARP EDGES.
- ALL WELDS TO BE 1/4" CONTINUOUS FILLET WELDS UNLESS OTHERWISE NOTED.
- SHOP TO VERIFY ALL I-BEAM CUT LENGTHS PRIOR TO SECTIONING BEAMS.
- CHECKER PLATE TO OVERHANG 1/4" ALL AROUND.
- OUTSIDE PERIMETER OF CHECKER PLATE TO MAIN RAILS AND END CROSS MEMBER. CHECKER PLATE TO ALL CROSS MEMBERS. UNDERSIDE OF CHECKER PLATE USING WPDS FC1-10 STICH 2-12.
- WELD PROCEDURE TO BE MCAW UNLESS OTHERWISE NOTED. WPDS FC1-15 AND FC1-10.

ORIGINAL

STRUCTURAL DESIGN DATA	
SURFACE PREP.:	SSPC-SP6-63 COMMERCIAL BLAST
PAINT:	83 PRIMER -1.5-2 MILS, 835 ENAMEL 2-3 MILS SKID - BLACK, PIPE SUPPORTS - WARM GREY
APPROX. WEIGHT	5000 LBS
INSULATION:	NONE

DOCUMENT NO.	DESCRIPTION	REV	DATE	BY	CHK	APP
08231-2	PIPING ASSEMBLY					
08231-1	PIPING AND INSTRUMENTATION DIAGRAM					
08231	GENERAL ARRANGEMENT	0	2012.01.10	JHK	JSL	ISSUED FOR CONSTRUCTION
REFERENCE DRAWINGS		DRAWING REVISIONS				

ISSUED FOR CONSTRUCTION

SIGNED: _____

DATE: _____

W.O.: _____

S.O.: _____

ALL DIMENSIONS IN INCHES



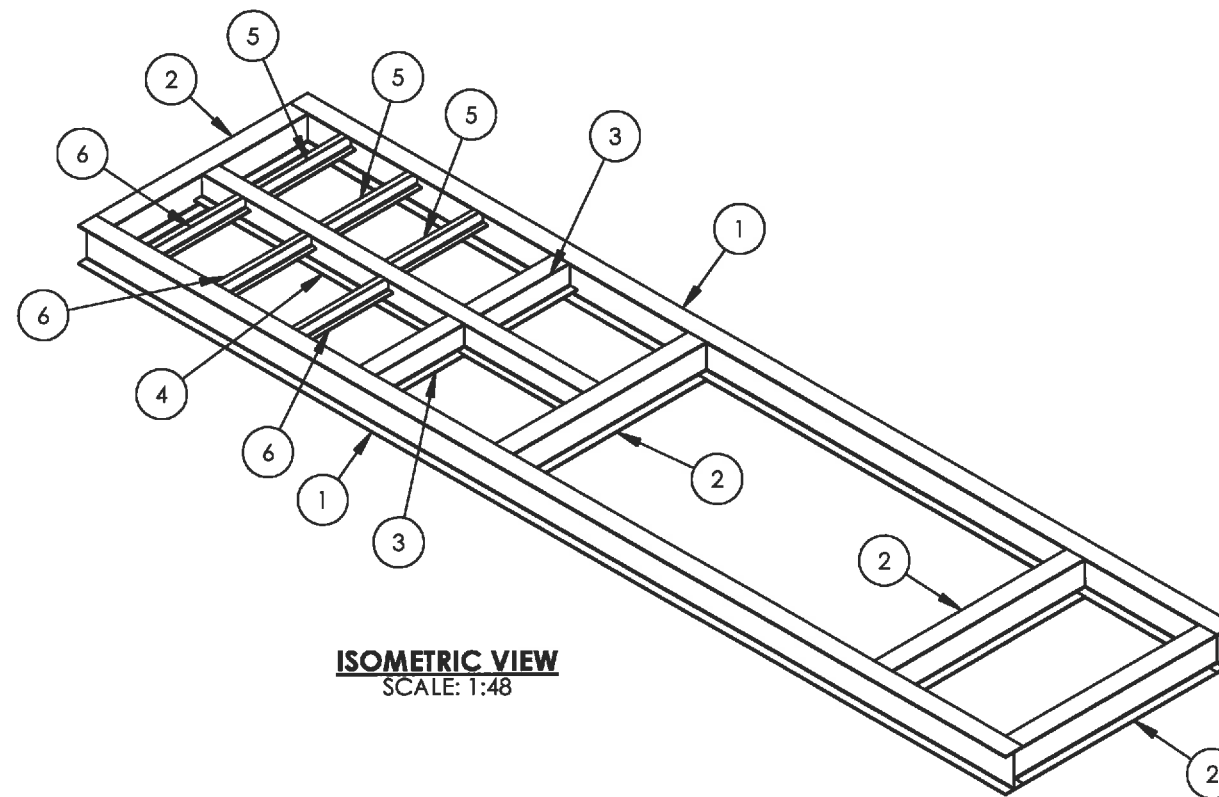
P.O. BOX 6280, INNISFAIL, AB T4G 1S9
PH: (403) 227-4100 FAX: (403) 227-4102

THIS DRAWING IS PROPERTY OF NWP INDUSTRIES INC. AND MAY NOT BE REPRODUCED WITHOUT PERMISSION. THIS DRAWING MUST BE RETURNED UPON REQUEST.

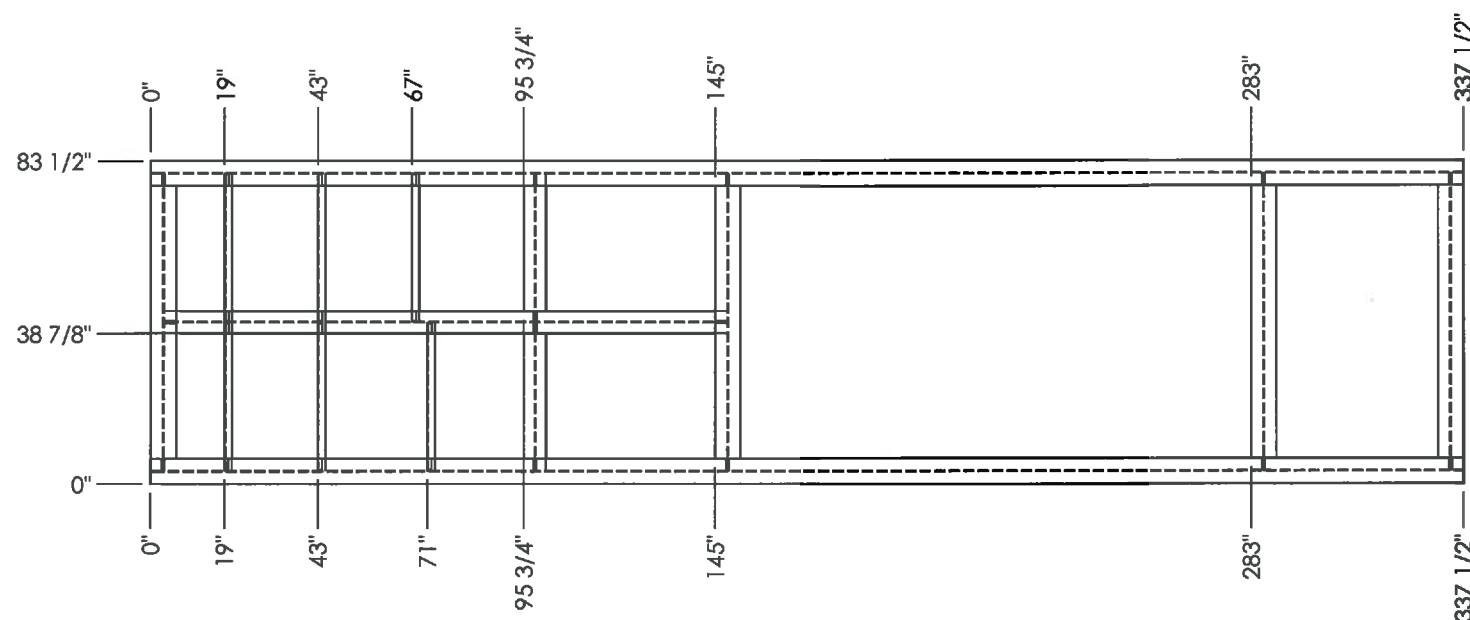
CONOCOPHILLIPS CANADA
2.5 MMBTU LINEHEATER PACKAGE
62" OD x 24'-0" LG BATH
4" S/XXH PREHEAT (8) x 4" S/XH REHEAT (8)
SKID ASSEMBLY

DWN: JHK	CHK: JSL	APP: J
DATE: 2012.01.10	DATE: Jun 20/12	DATE: Jun 19/12
SCALE: 1:48	DWG: 08231-3	REV: 0
SHEET: 1 OF 4		

ITEM	QTY.	Description	PART #	LENGTH
1	2	WIDE FLANGE 12" @ 26# 350W/ASTM A992	WFL1226R	337 1/2"
2	4	WIDE FLANGE 12" @ 26# 350W/ASTM A992	WFL1226R	76 3/4"
3	2	WIDE FLANGE 10" @ 22# 350W/ASTM A992	WFL1022	38 1/4"
4	1	WIDE FLANGE 10" @ 22# 350W/ASTM A992	WFL1022	144 3/4"
5	3	C-CHANNEL 6" @ 8.2# 300W	CHA68R	38 1/4"
6	3	C-CHANNEL 6" @ 8.2# 300W	CHA68R	38 1/4"



ISOMETRIC VIEW
SCALE: 1:48



PLAN VIEW
SCALE: 1:48

ORIGINAL

DOCUMENT NO.	DESCRIPTION	REV	DATE	BY	CHK	APP	DRAWING REVISIONS
08231-2	PIPING ASSEMBLY						
08231-1	PIPING AND INSTRUMENTATION DIAGRAM						
08231	GENERAL ARRANGEMENT	0	2012.01.10	JHK	<i>[Signature]</i>	<i>[Signature]</i>	ISSUED FOR CONSTRUCTION
	REFERENCE DRAWINGS						

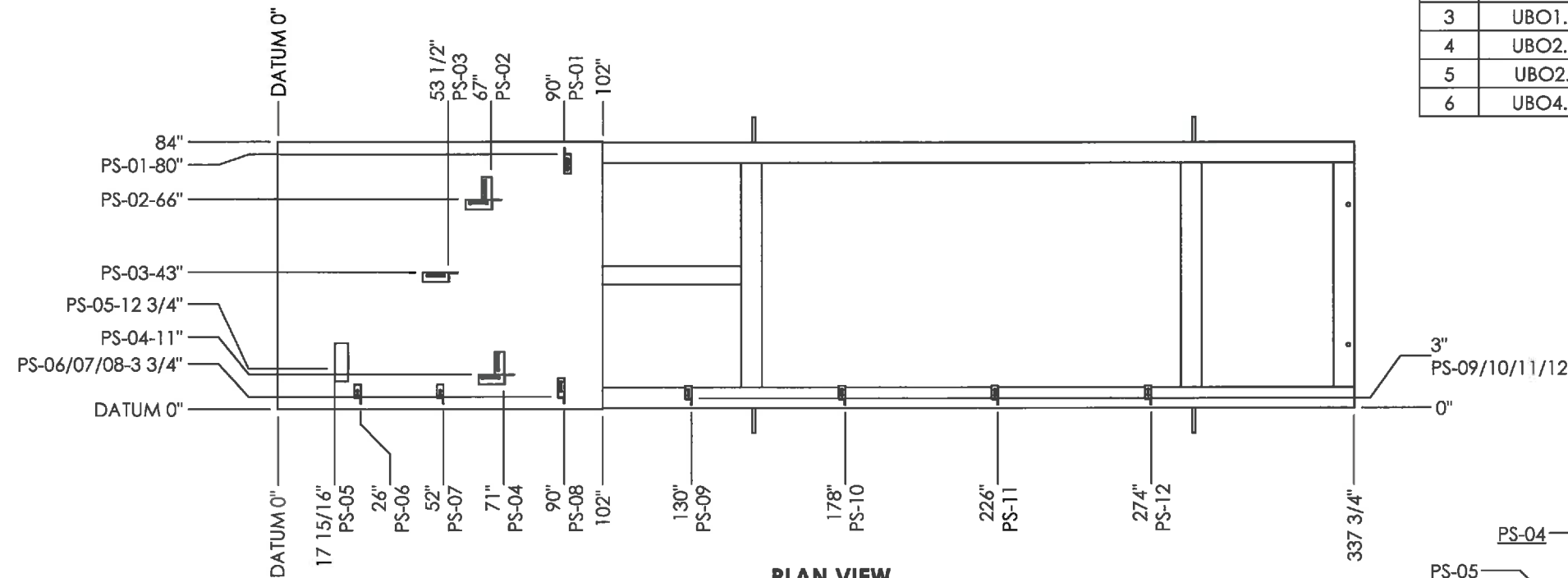
ISSUED FOR CONSTRUCTION
 SIGNED: _____
 DATE: _____
 W.O.: _____
 S.O.: _____
 ALL DIMENSIONS IN INCHES

NWP INDUSTRIES INC.
 Total oilfield supply.
 P.O. BOX 6280, INNISFAIL, AB T4G 1S9
 PH: (403) 227-4100 FAX: (403) 227-4102

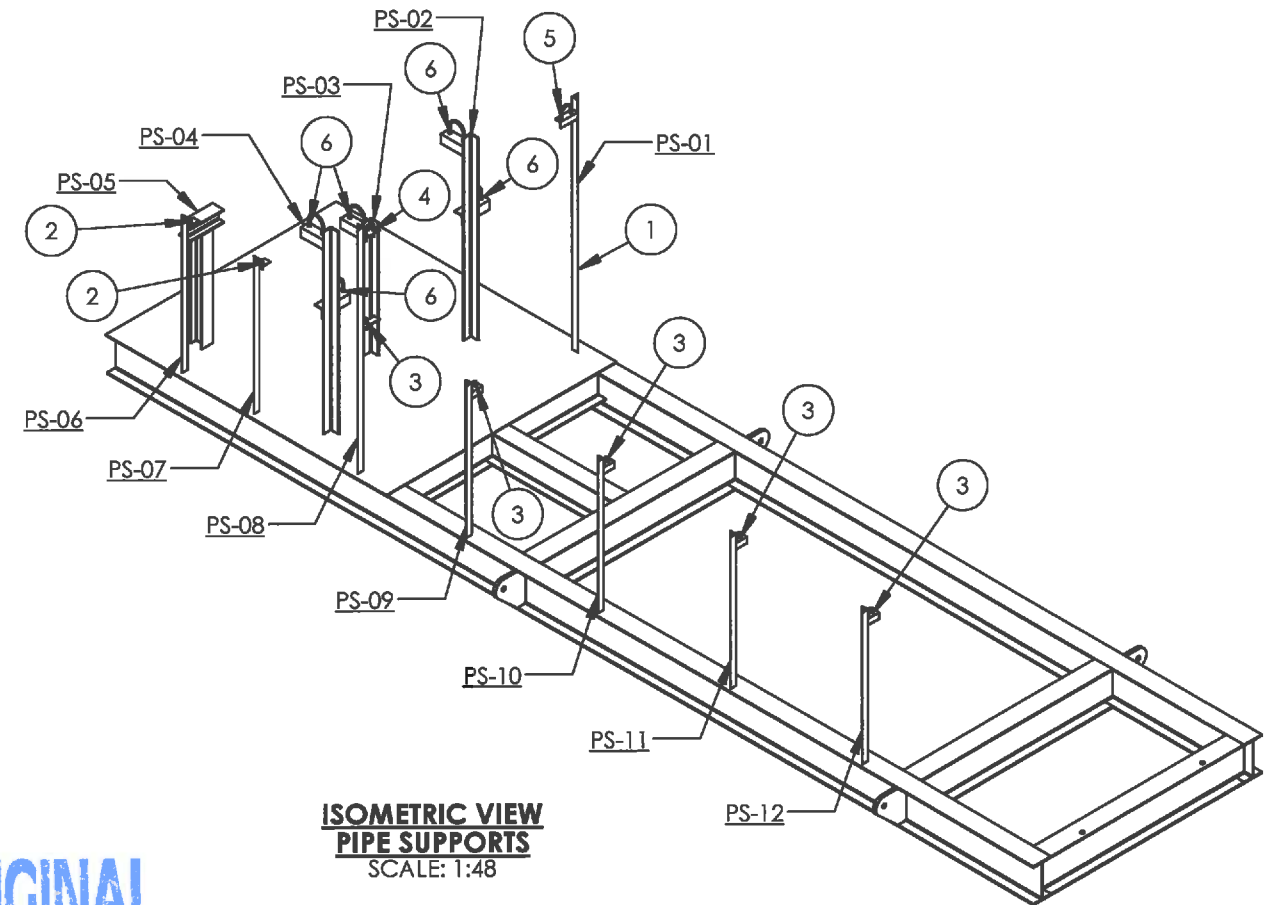
THIS DRAWING IS PROPERTY OF NWP INDUSTRIES INC. AND MAY NOT BE REPRODUCED WITHOUT PERMISSION. THIS DRAWING MUST BE RETURNED UPON REQUEST.

CONOCOPHILLIPS CANADA 2.5 MMBTU LINEHEATER PACKAGE 62" OD x 24'-0" LG BATH 4" S/XXH PREHEAT (8) x 4" S/XH REHEAT (8) SKID ASSEMBLY		
DWN: JHK	CHK: <i>[Signature]</i>	APP: <i>[Signature]</i>
DATE: 2012.01.10	DATE: <i>[Signature]</i>	DATE: <i>[Signature]</i>
SCALE: 1:48	DWG: 08231-3	REV: 0
SHEET: 2 OF 4		

ITEM	PART #	DESCRIPTION	MTR #	LENGTH	QTY.
1	-	SEE CUT LIST			1
2	UBO.5.375	U-BOLT 1/2" x 3/8" c/w 4 NUTS FIG. 137			2
3	UBO1.375	U-BOLT, 1" x 3/8" c/w 4 NUTS FIG. 137			5
4	UBO2.375	U-BOLT 2" x 3/8" c/w 4 NUTS FIG. 137			1
5	UBO2.5.5	U-BOLT 2 1/2" x 1/2" c/w 4 NUTS FIG. 137			1
6	UBO4.375	U-BOLT 4" x 3/8" c/w 4 NUTS FIG. 137			5



**PLAN VIEW
PIPE SUPPORTS**
SCALE: 1:48



**ISOMETRIC VIEW
PIPE SUPPORTS**
SCALE: 1:48

ORIGINAL

DOCUMENT NO.	DESCRIPTION	REV	DATE	BY	CHK	APP	DRAWING REVISIONS
08231-2	PIPING ASSEMBLY						
08231-1	PIPING AND INSTRUMENTATION DIAGRAM						
08231	GENERAL ARRANGEMENT	0	2012.01.10	JHK	<i>[Signature]</i>	<i>[Signature]</i>	ISSUED FOR CONSTRUCTION
REFERENCE DRAWINGS							

ISSUED FOR CONSTRUCTION

SIGNED: _____

DATE: _____

W.O.: _____

S.O.: _____

ALL DIMENSIONS IN INCHES

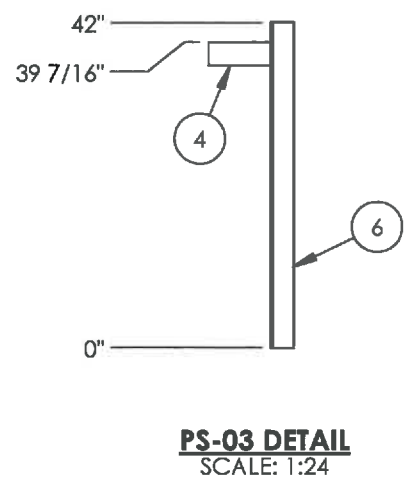
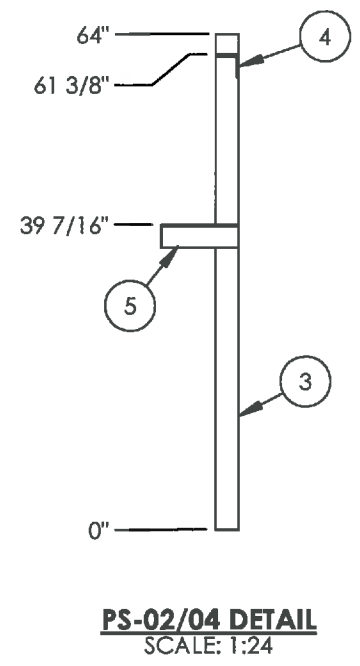
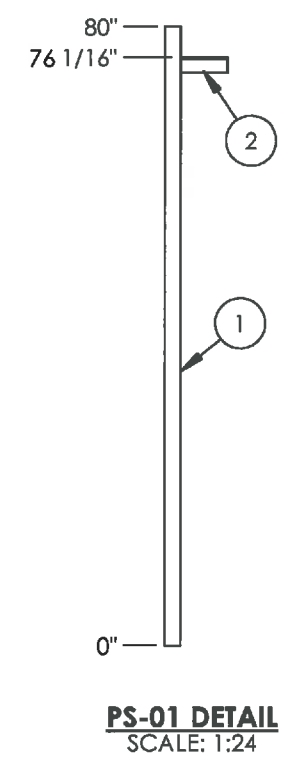
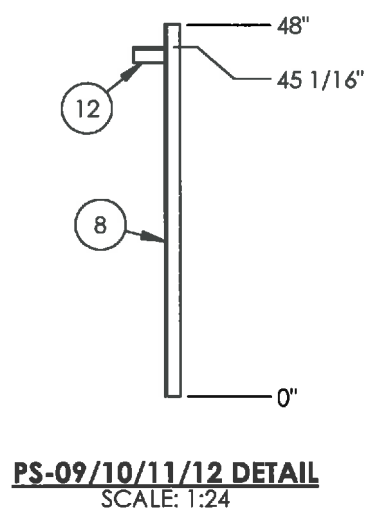
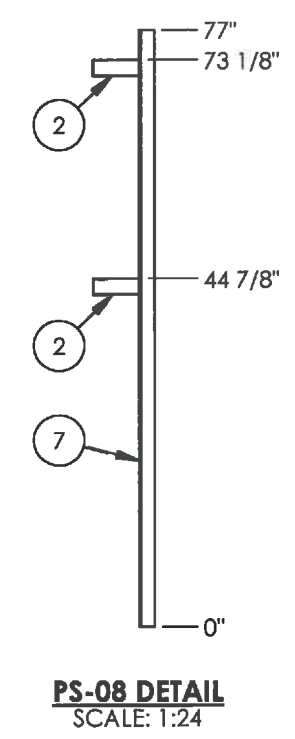
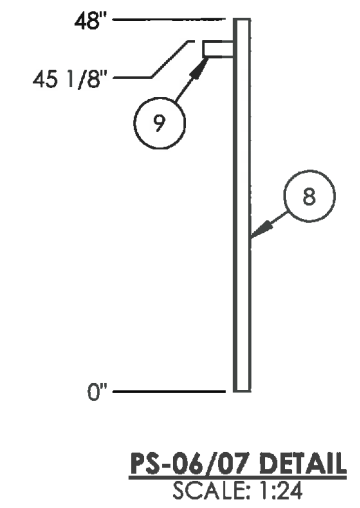
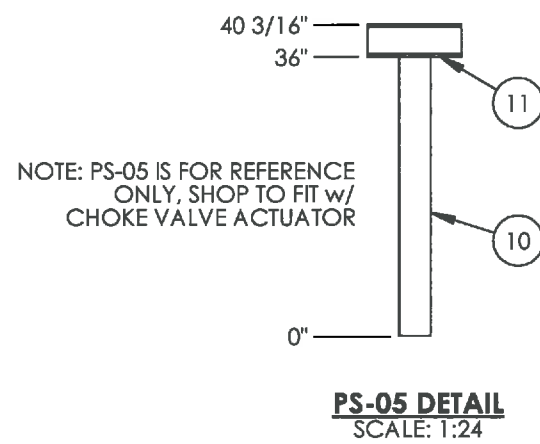
NWP
INDUSTRIES INC.
Total oilfield supply.

P.O. BOX 6280, INNISFAIL, AB T4G 1S9
PH: (403) 227-4100 FAX: (403) 227-4102

THIS DRAWING IS PROPERTY OF NWP INDUSTRIES INC. AND MAY NOT BE REPRODUCED WITHOUT PERMISSION. THIS DRAWING MUST BE RETURNED UPON REQUEST.

CONOCOPHILLIPS CANADA 2.5 MMBTU LINEHEATER PACKAGE 62" OD x 24'-0" LG BATH 4" S/XXH PREHEAT (8) x 4" S/XH REHEAT (8) SKID ASSEMBLY			
DWN: JHK	CHK: <i>[Signature]</i>	APP: <i>[Signature]</i>	
DATE: 2012.01.10	DATE: <i>June 20/12</i>	DATE: <i>Jan 19/2012</i>	
SCALE: 1:48	DWG: 08231-3	SHEET: 3 OF 4	REV: 0

ITEM	QTY.	Description	PART #	LENGTH
1	1	ANGLE IRON 1/4" x 2" x 2" 300W	ANGC22A	80"
2	3	ANGLE IRON 1/4" x 2" x 2" 300W	ANGC22A	6"
3	2	ANGLE IRON 1/4" x 3" x 3" 300W	ANGC33A	64"
4	3	ANGLE IRON 1/4" x 3" x 3" 300W	ANGC33A	8"
5	2	ANGLE IRON 1/4" x 3" x 3" 300W	ANGC33A	10"
6	1	ANGLE IRON 1/4" x 3" x 3" 300W	ANGC33A	42"
7	1	ANGLE IRON 1/4" x 2" x 2" 300W	ANGC22A	77"
8	6	ANGLE IRON 1/4" x 2" x 2" 300W	ANGC22A	48"
9	2	ANGLE IRON 1/4" x 2" x 2" 300W	ANGC22A	4"
10	1	WIDE FLANGE 4" @ 13# 350W/ASTM A992	WFL413R	36"
11	1	WIDE FLANGE 4" @ 13# 350W/ASTM A992	WFL413R	12"
12	4	ANGLE IRON 1/4" x 2" x 2" 300W	ANGC22A	4"



ORIGINAL

DOCUMENT NO.	DESCRIPTION	REV	DATE	BY	CHK	APP	DRAWING REVISIONS
08231-2	PIPING ASSEMBLY						
08231-1	PIPING AND INSTRUMENTATION DIAGRAM						
08231	GENERAL ARRANGEMENT	0	2012.01.10	JHK	JHK	JHK	ISSUED FOR CONSTRUCTION
	REFERENCE DRAWINGS						

ISSUED FOR CONSTRUCTION

SIGNED: _____

DATE: _____

W.O.: _____

S.O.: _____

ALL DIMENSIONS IN INCHES

NWP
INDUSTRIES INC.
Total oilfield supply.

P.O. BOX 6280, INNISFAIL, AB T4G 1S9
PH: (403) 227-4100 FAX: (403) 227-4102

THIS DRAWING IS PROPERTY OF NWP INDUSTRIES INC. AND MAY NOT BE REPRODUCED WITHOUT PERMISSION. THIS DRAWING MUST BE RETURNED UPON REQUEST.

CONOCOPHILLIPS CANADA
2.5 MMBTU LINEHEATER PACKAGE
62" OD x 24'-0" LG BATH
4" S/XXH PREHEAT (8) x 4" S/XH REHEAT (8)
SKID ASSEMBLY

DWN: JHK	CHK: JHK	APP: JHK
DATE: 2012.01.10	DATE: Jan 20/12	DATE: Jan 19/2012
SCALE: 1:24	DWG: 08231-3	REV: 0
SHEET: 4 OF 4		